




# THE WHITCHURCH CE FEDERATION NEWSLETTER


*Learning to Love God and Love our neighbour as ourselves*  
*Luke 10: 25-37*

Dear Parents and Carers,

We are excited to have launched our Speak Up Speak Out initiative across the federation.



**SPEAK UP.  
SPEAK OUT.**



If you have a worry or concern that you would like to talk about, please type your comments in the chat box.

You can still talk to any teacher in school.

We at the Whitchurch Federation ensure that all our pupils feel comfortable to talk about how they feel to any of our staff, we encourage our pupils to all take part in the NSPCC sessions and PSHE work around their safety, wellbeing and to be free from harm. We ensure all our staff keep up to date with Safeguarding training and how to support all our pupils.

We understand that sometimes our pupils will not want to openly talk to an adult about how they are feeling and also might not see an opportunity to in a busy classroom.


On Thursday last week we launched our Speak Up, Speak Out classroom on Showbie. All our pupils from Year 1 to Year 6 have a 1:1 iPad for their learning and onto this we have created a space so that the children can message myself, Mr Lewis, Mr Penney, Ms. Walsh and Mr Wood.

The message stays private between the individual children and the senior leaders at school.

We absolutely encourage the children to talk to their class adults but this provides another means for our pupils to make contact with us if they have any worries.

Pictured below are some slides from Worship which show what we talked about in Worship.

## NSPCC




The idea of today's assembly is to highlight that sadly, sometimes, an adult may not treat a child in the proper way. This can make them feel:

**Scared, unloved or mistreated.**

All children have the right to feel :


**Safe, Cared for and Valued**

## NSPCC



Remember, these are the some areas which are NOT OK.

**Hitting or hurting a child.**



This can leave marks on the body like cuts or bruises.

## NSPCC



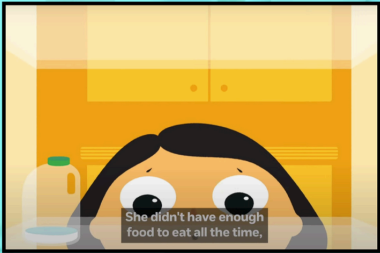
**When privates are not private**



- When privates are not private.



As well as these things, sometimes, a child may not have the things they need at home...



If you, or someone you know, is experiencing any of these things, speak out.

Remember, you could...



1. Tell a trusted adult.

This could be:

A family member

A teacher

Another person over 18 who they trust



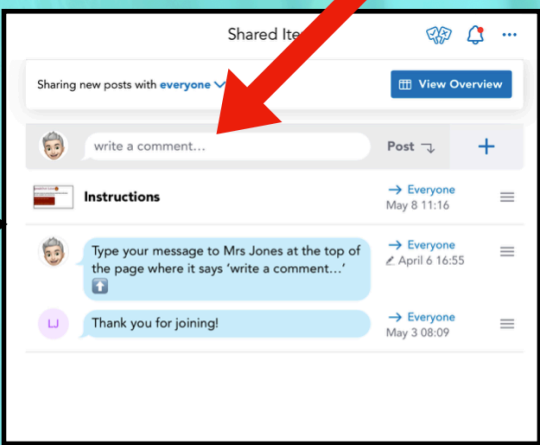
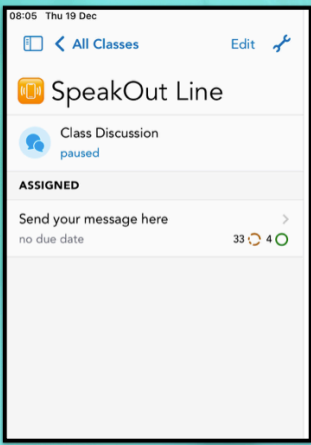
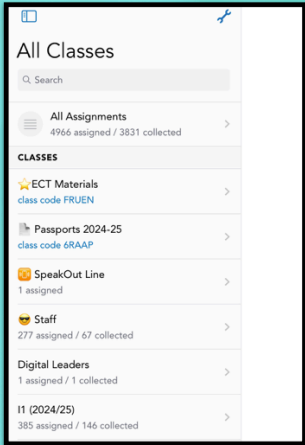
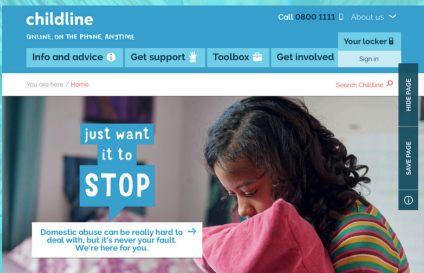
2. They could use the Whitchurch SpeakOut line

SpeakOut Line

If a child was experiencing one of the things we've talked about today, and wanted to tell someone, they may find it easier to send a message.

Let's see how it works.

3. Contact Childline



Drop off and Collection to School

From Monday 3rd February there will be NO vehicle access to the Infant site due to building works starting – this includes before and after school parents and for those that attend Treehouse.

Can we also take this opportunity to remind you to be respectful to our neighbours and be mindful where you are parking in the surrounding streets around both school during drop off and collection.

Reminders



Safeguarding

Pictured to the above are our Federation Designated Safeguarding Leads.

If you need to report a safeguarding concern you will need to contact the NSPCC.

More information can be found on their website: <https://www.nspcc.org.uk/keeping-children-safe/reporting-abuse/report/>

Admissions

As of January 2025 our nursery is full, we may have a small number of places from April 2025, places will be granted in line with our admissions policy.

Please visit our website for more information about admissions and how to add your child to our Nursery waiting list.

School Lunches

Next week will be on week one of the lunch menu. School lunches can be pre-ordered and paid for at home for up up to three weeks via the ParentPay website. School meals are free for all pupils in Reception, Year 1 and Year 2. Meals for pupils in Nursery and Key Stage 2 have a small daily. If you currently pay for school meals but think you may be eligible for free school meals please visit the Shropshire Council website to apply.

# WEEK THREE

## DINE WITH MIQUILL

### DINE Vegetarian Meal

### DINE Main Meal

### DINE Jackets or Pasta

Sweet choices

#### MONDAY

**Cheese & Tomato Pizza**  
with Wedges,  
Carrots & Green  
Salad

**Mac & Cheese**  
with Green Salad

**Fresh Tomato Pasta or Jacket Potato** with Beans, Cheese or Tuna

**Fruit Muffin**

#### TUESDAY

**Vegetable Korma**  
with Wholegrain  
Rice, Carrots &  
Green Cabbage

**Chicken Tikka Curry**  
with Wholegrain  
Rice, Carrots &  
Green Cabbage

**Fresh Tomato Pasta or Jacket Potato** with Beans, Cheese or Tuna

**Vanilla Shortbread**

#### WEDNESDAY

**Quorn Roast**  
with Roasties, Green  
Beans and Sweetcorn

**Roast Chicken Stuffing & Gravy**  
with Roasties, Green  
Beans & Sweetcorn

**Fresh Tomato Pasta or Jacket Potato** with Beans, Cheese or Tuna

**Lemon Drizzle Cake**

#### THURSDAY

**Mac & Cheese**  
with Green Salad

**Mexican Beef & Lentil Chilli**  
with Green Salad

**Fresh Tomato Pasta or Jacket Potato** with Beans, Cheese or Tuna

**Chocolate Cookie**

#### FRIDAY

**Veggie Hot Dog**  
with Chips &  
Garden Peas or  
Baked Beans

**Golden Breaded Fish Fingers**  
with Chips &  
Garden Peas or  
Baked Beans

**Fresh Tomato Pasta or Jacket Potato** with Beans, Cheese or Tuna

**Ice Cream**

WEEK COMMENCING:  
16/11, 09/12, 13/01, 03/02,  
03/03, 24/03

Fresh Bread, Yoghurt, Jelly and Fruit are available daily

MIQUILL

The Treehouse

We are currently not accepting any new bookings for Treehouse as we are currently at capacity with a number of pupils on the waiting list for places. It is unlikely that sessions for new bookings will become available until September 2025.

Absence

If your child is going to be absent from school please contact the Academy office via telephone by 9:30am and leave a voicemail message to give the reason for the absence. Please do not email, text or dojo as these may not be checked until later in the day and we may still contact you.



Warm regards,  
Mrs Camacho.

